



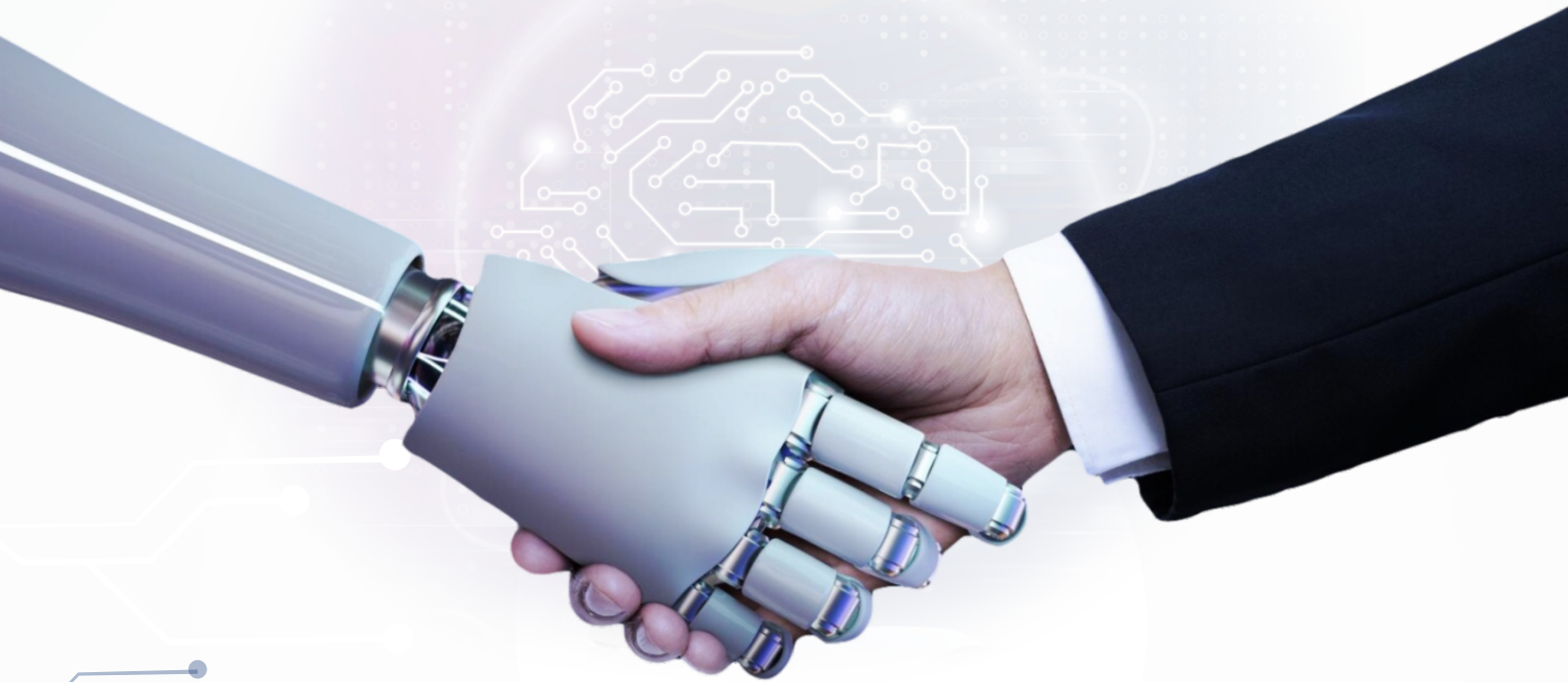
# KALINGA UNIVERSITY



**NAAC**  
**GRADE B+**  
Accredited University



Ranked in  
Top 101-150  
Universities



B. Tech. Computer Science in

# ARTIFICIAL INTELLIGENCE & MACHINE LEARNING

In Collaboration with



Innovation Centre for Education

# ABOUT KALINGA UNIVERSITY

Kalinga University, Raipur has emerged as a centre of excellence of higher education in Central India. Strategically located in the Smart City of New Raipur, this University has started carving a niche for itself in the education domain and is rising as a shining star on the horizon of quality education.

**About Raipur** - Raipur is the Capital of Chhattisgarh and New Raipur is the New Capital of Chhattisgarh in the making. New Raipur is the fourth planned city of India with wide roads and miles of greenery and is pollution free. It is the first integrated and smart city in the country. A cosmopolitan city which is also the hub of higher education hosts IIM, IIT, IIIT, National Law University, CIPET, NIT and AIIMS. In addition, it also hosts most National and International Brands of Food and Retail Outlets.

**Establishment** - Established in 2013, this University has been able to win the confidence of over 7000 students. Meritorious students from all over the country and various foreign countries like Afghanistan, Angola, Bangladesh, Cameroon, Gambia, Ivory Coast, Kenya, Lesotho, Liberia, Malawi, Namibia, Nepal, Nigeria, Papua New Guinea, South Sudan, Swaziland, Tanzania, Uganda, Zambia and Zimbabwe etc. have chosen this University for their education and career.

**Schools of Excellence** - Currently the University is serving the student community through various schools offering UG and PG programs namely Arts & Humanities, Biotechnology, Commerce & Management, UX Design, Engineering, Fashion Design, Information Technology, Interior Design, Journalism & Mass Communication, Law, Library Science, Pharmacy, Science, Education and Yoga. It also has a centre for Doctoral Research Programmes in various fields.

**Academics and Faculty** - All schools are headed by senior professors having excellent academic credentials and experience of teaching, publications and research. They are ably supported by well-qualified faculty members who come from top educational institutions and the Industry. Students also get an opportunity to learn from a distinguished panel of experts drawn from various industries, who regularly come for guest lectures.

**Infrastructure** - Kalinga boasts of World Class Infrastructure and student facilities with a student-centric approach. The highest attention is paid to the hands-on learning approach and students are encouraged to come up with innovative ideas for projects and practicals. The University has more than 75 laboratories and workshops, all well-equipped with the latest, state-of-the-art apparatus and tools. Special emphasis is given to the development of communication skills through the language lab. More than 1200 computers are available for the use of the students.

The Library has a collection of over 80,000 books and also offers digital content through membership in DELNET, National Digital Library and NPTEL. Various magazines and journals are available for the use of the faculty and students. The infrastructure consists of Student Hostel facilities, Green Acres, Canteen, Food Mess, Gymnasium, a Fully Wi-Fi Campus, ATM, Mini Market, Student hangout Areas, Sports Complex, Recreation Halls with Indoor Games and Music and recreation activities.

**Industry Orientation and Leadership** - Industry interaction is an integral part of the curriculum and industrial visits, internships on live projects and mentoring by the Industry leaders are regular features. The University has developed excellent connections with the top Industries of the region by taking memberships in leading industry associations like the Confederation of Indian Industries, PHD Chamber of Commerce and Industry, Federation of Indian Chamber of Commerce and Industry, Indian Importers Chamber of Commerce and Industry, etc. The University has an active chapter of Young Indians in which students get an opportunity to interact extensively with Industry leaders and attend various corporate seminars and events.

**Life-Changing Experience** - Kalinga is a Life Changing Experience where the focus is on the overall development of students. NCC, NSS and various other clubs and societies offer opportunities to students to showcase their talent and learn under the guidance of experts. Music, Dance and Martial Arts trainers are available for the students. Coaches of different games and sports like Cricket, Football, Basketball, Volleyball and Athletics are also available for sharpening the skills of the students.



# ABOUT IBM

- ▶ International Business Machines Corporation (IBM) is an American Multinational Information Technology company headquartered in New York with operations in over 170 countries. The Company was founded in 1911 as the Computing-Tabulating-Recording Company (CTR) which was renamed into IBM in 1924. IBM produces and sells computer hardware, middleware and software, and provides hosting and consulting services in areas ranging from mainframe computers to nanotechnology.
- ▶ IBM has a large and diverse portfolio of products and services and the offerings fall into the categories of data and analytics, Internet of Things (IoT), IT infrastructure, mobile, security, cloud computing, cognitive computing and commerce.
- ▶ IBM is also a major research organization, holding the record for most U.S. patents generated by a business for 26 consecutive years. The maximum number of patents in recent years have come from the latest technologies like Cyber Security.
- ▶ In the span of a century, IBM has evolved from a small business that made scales, time clocks and tabulating machines to a globally integrated enterprise with more than 400,000 employees and a strong vision for the future.
- ▶ Inventions by IBM include the automated teller machine (ATM), the floppy disk, the hard disk drive, the magnetic stripe card, the relational database, the SQL programming language, the UPC barcode, and dynamic random-access memory (DRAM).
- ▶ IBM has transformed the way we work and live with their belief that together we can make the world work better.
- ▶ IBM has won numerous awards and accolades in the past and has been there in the forefront of research and development in the field of computer science. IBM holds more than a lakh patents and the majority of the latest patents are in niche technologies.

# ABOUT IBM

## INNOVATION CENTER FOR EDUCATION (IBM ICE)

- ▶ IBM Innovation Center for Education (ICE) is a key initiative from IBM Systems focused on preparing the next level of professionals who would lead the building of a smarter planet, by enabling cutting-edge Information Technology and Industry domain skills directly through their University curriculum.
- ▶ IBM ICE thus prepares them for handling technology leadership roles coming up in future. IBM ICE partners and collaborate with universities and educational organizations around the world to bridge the gap between the traditional curriculum and actual industry experience so as to broaden opportunities for the next generation of technology professionals.
- ▶ Industry experts who have years of knowledge and experience design the curriculum of the various courses. IBM ICE offers an array of cutting-edge technology courses that let industry professionals and students interact and prepare them for solving the problems of tomorrow.



## PROGRAMS & ELIGIBILITY

S.No.	Program	Duration	Mode	Eligibility
01.	B. Tech CS in AI & ML In collaboration with IBM	4 Years	Semester	<p>Passed 10+2 examination with Physics and Mathematics as compulsory subjects and any one of the below mentioned subjects:</p> <p>Chemistry/Computer Sc./Electronics/IT/Biology/Information practices/Biotechnology/Technical Vocational Subject/Agriculture/Engineering Graphics/Business Studies/Entrepreneurship with at least 45% marks in these (3) subjects ,taken together ( 40% marks in case of candidates belonging to reserved category )</p>



# CAREER OPTIONS

Armed Forces • Automotive & Ancillaries • Civil & Construction • Computer Engineer • Electrical & Electronics • Energy Engineering • Environmental Engineering • Food & Processing • General/Multiple Fields • Government/Public Sector • HVAC Engineer • Industrial Engineering & Operations Research • Lecturer/Academia • Manufacturing • Mechanical Engineering • Mining Materials Science Engineering • Mobile/Telecom Service • Nuclear Engineering • Petroleum & Gas • Procurement • Software/Hardware Engineer • Statistics/Mathematics

# SECTORS EMPLOYING AI & ML ENGINEERING GRADUATES

## Automobile Companies

Ashok Leyland • Bajaj Auto Ltd. • Hero Moto Corp. • Hyundai • Mahindra & Mahindra Ltd. • Maruti Suzuki • Tata Motors • TVS Motors Company

## Construction/Infrastructure Companies

DLF • Gammon India • Jaypee Group • Larsen and Toubro • Oberoi Realty • Reliance Infrastructure • Tata Projects • Unitech

## Engineering Companies

Bharat Heavy Electricals Limited (BHEL) • Godrej • Havells India Ltd. • Indian Oil Corporation • Larson & Toubro (L&T) • Maruti Suzuki India Ltd. • Reliance Industries • Tata Motors

## FMCG/FMCD

Crompton Greaves Consumer Electricals Ltd. • Dabur India Ltd. • ITC • LG • Panasonic • Blue Star Ltd. • Samsungs Ltd. • Voltas Ltd.

## IT & Technologies Companies

Acer India Pvt Ltd. • Amazon • Cisco • Google • HCL Technologies Ltd. • Hewlett-Packard India Sales Pvt. Ltd. • IBM • Infosys Limited • Intel Technology India Pvt. Ltd. • Lenovo India Pvt. Ltd. • Microsoft • Oracle Financial Services Software Ltd. • Redington India Ltd. • Tata Consultancy Services Ltd. • Wipro Ltd.

## Large Government Organisations

Bhabha Atomic Research Center • Bharat Heavy Electricals Ltd. • Defense Research & Development Organization • Indian Defence - Army, Navy and Air Force • Indian Space Research Organization • NTPC Ltd. • Indian Railways

## Manufacturing Companies

Bharat Electronics Ltd. (BEL) • Borosil Glass Works Ltd. (BGWL) • Hindustan Unilever Ltd. (HUL) • Lava International Ltd. • Moser Baer India Ltd. • Pioneer India • Rain Industries Ltd. (RAIN) • Tata Chemicals Ltd.

## Multinational Companies

ABB Group • BOSCH • Coca-Cola • General Electric Company • GMR Group • Schneider Electric • Siemens • Suzlon Energy Ltd. • Thermax Ltd. • Thyssen Krupp

## Telecom

Airtel • BSNL • Jio • MTNL • Reliance Communications • Tata Teleservices • Telenor India • Vodafone India

# APPROVALS & ASSOCIATIONS



**Call :** +91-9907252100 (For Indian Students),  
+977-9823770750 & +977-9823486747 (For Nepal Students),  
+91-7470783000 (For International Students)

**Campus :** Kalinga University, Kotni, Near Mantralaya Naya Raipur – 492101, Chhattisgarh, India.

**City Office :** 1st Floor, SLT Water Front, Opp. Telibandha Talab, Raipur - 492001.

**Bhilai Office :** T11, Khichariya Complex, Near Hotel Grand Dhillon, Nehru Nagar, Bhilai, 490020.

**admissions@kalingauniversity.ac.in**

To register for our Entrance Examination "KALSEE" Scan the QR Code

